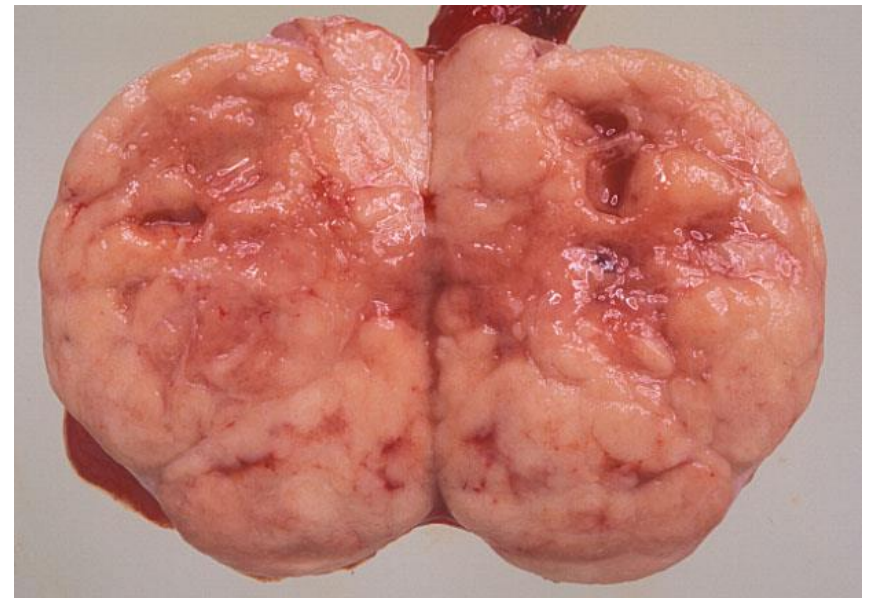


Advanced Histopathology 2018

UROPATHOLOGY

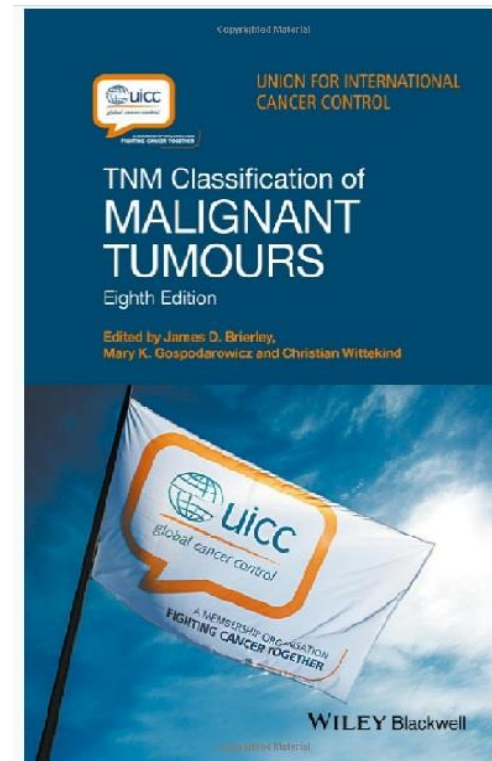
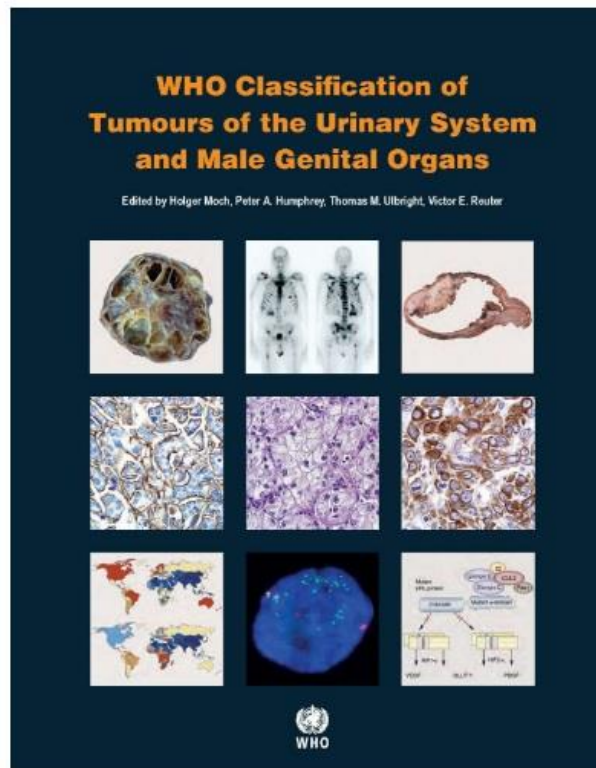
References



Dr Anne Warren
Cambridge University Hospitals NHS FT

WHO classification 2016

UICC TNM 8th Edition



UK RCPaTh datasets



The Royal College of Pathologists

Pathology: the science behind the cure

Standards and datasets for reporting cancers

Dataset for histopathological reporting of adult renal parenchyma neoplasms

NOVEMBER 2017

Authors: Dr Anne Y Warren, Cambridge University Hospitals
Dr David Griffiths, Cardiff and Vale University Health Board
Professor Stewart Fleming, University of Dundee



The Royal College of Pathologists

Pathology: the science behind the cure

Standards and datasets for reporting cancers

Dataset for the histological reporting of testicular neoplasms

May 2014

Authors: Professor Dan Berney, St Bartholomew's Hospital, Queen Mary University of London
Dr Jeffrey Theaker, University Hospitals Southampton
Dr Clare Verrill, Oxford University Hospitals NHS Trust, John Radcliffe Hospital, Oxford



The Royal College of Pathologists

Pathology: the science behind the cure

Standards and datasets for reporting cancers

Dataset for histopathology reports for prostatic carcinoma

June 2016

Authors: Dr Jon Oxley (lead author), North Bristol NHS Trust
Dr Murali Varma, Cardiff and Vale University Health Board
Professor Dan Berney, St Bartholomew's Hospital, Barts Health NHS Trust



The Royal College of Pathologists

Pathology: the science behind the cure

Standards and datasets for reporting cancers

**Dataset for tumours of the urinary collecting system
(renal pelvis, ureter, urinary bladder and urethra) (2nd edition)**

April 2013

Authors: Dr Jonathan H Shanks, The Christie NHS Foundation Trust, Manchester
Dr Ashish Chandra, Guys and St Thomas' NHS Foundation Trust, London
Dr Lorna McWilliam, Central Manchester University Hospitals NHS Foundation Trust
Dr Murali Varma, University Hospital of Wales, Cardiff

Uropathology Immunohistochemistry

 SPECIAL ARTICLE

Best Practices Recommendations in the Application of Immunohistochemistry in Testicular Tumors *Report From the International Society of Urological Pathology Consensus Conference*

Thomas M. Ulbright, MD,* Satish K. Tickoo, MD,†
Daniel M. Berney, FRCP,‡ John R. Srigley, MD,§|| and Members of the ISUP
Immunohistochemistry in Diagnostic Urologic Pathology Group

 SPECIAL ARTICLE

Best Practices Recommendations in the Application of Immunohistochemistry in the Bladder Lesions *Report From the International Society of Urologic Pathology Consensus Conference*

Mahul B. Amin, MD,* Kiril Trpkov, MD,† Antonio Lopez-Beltran, MD,‡ David Grignon, MD,§ and
Members of the ISUP Immunohistochemistry in Diagnostic Urologic Pathology Group

 SPECIAL ARTICLE

Best Practices Recommendations in the Application of Immunohistochemistry in the Kidney Tumors *Report From the International Society of Urologic Pathology Consensus Conference*

Victor E. Reuter, MD,* Pedram Argani, MD,† Ming Zhou, MD, PhD,‡
Brett Delahunt, MD, FRCPA,§ and Members of the ISUP Immunohistochemistry
in Diagnostic Urologic Pathology Group

 SPECIAL ARTICLE

Best Practices Recommendations in the Application of Immunohistochemistry in the Prostate *Report From the International Society of Urologic Pathology Consensus Conference*

Jonathan I. Epstein, MD,* Lars Egevad, MD, PhD,† Peter A. Humphrey, MD, PhD,‡
Rodolfo Montironi, MD,§ and Members of the ISUP Immunohistochemistry
in Diagnostic Urologic Pathology Group

Best Practices Recommendations in the Application of Immunohistochemistry in Urologic Pathology *Report From the International Society of Urologic Pathology Consensus Conference*

Mahul B. Amin, MD,* Jonathan I. Epstein, MD,† Thomas M. Ulbright, MD,‡
Peter A. Humphrey, MD, PhD,§ Lars Egevad, MD,|| Rodolfo Montironi, MD,¶
David Grignon, MD,‡ Kiril Trpkov, MD,‡ Antonio Lopez-Beltran, MD,* Ming Zhou, MD,††
Pedram Argani, MD,† Brett Delahunt, MD,‡‡ Daniel M. Berney, MD,§§
John R. Srigley, MD,||| Satish K. Tickoo, MD,¶¶ and Victor E. Reuter, MD,¶¶

American Journal of Surgical Pathology 2014

Renal tumour references

SPECIAL ARTICLE

Handling and Staging of Renal Cell Carcinoma

The International Society of Urological Pathology

Consensus

Kiril Trpkov, MD, FRCPath
Mahul B. Amin, MD, FRCPath
Hemant K. Arora, MD, FRCPath
Brett L. Goldstein, MD, FRCPath
Rodolfo Montironi, MD, FRCPath

SPECIAL ARTICLE

The International Society of Urological Pathology (ISUP) Vancouver Classification of Renal Neoplasia

John R. Srigley, MD,* Brett L. Goldstein, MD,†
Jonathan I. Epstein, MD,‡ Rodolfo Montironi, MD,§
Pedram Razvi, MD,||

SPECIAL ARTICLE

The International Society of Urological Pathology (ISUP) Grading System for Renal Cell Carcinoma and Other Prognostic Parameters

Brett Delahunt, MD,* John C. Cheville, MD,†
Cristina Magi-Galluzzi, MD,‡ Jesse McKenney, MD,§
Holger Moch, MD,** David J. Grignon, MD,††
John R. Srigley, MD,§§|| and The ISUP Renal Tumor Panel

SPECIAL ARTICLE

Renal Tumors Diagnostic and Prognostic Biomarkers

Puay Hoon Tan, MD, FRCPA,* Liang Cheng, MD,† Nathalie Rioux-Leclercq, MD,‡
Maria J. Merino, MD,§ George Netto, MD,|| Victor E. Reuter, MD,¶ Steven S. Shen, MD,||
David J. Grignon, MD,† Rodolfo Montironi, MD, FRCPath,** Lars Egevad, MD,††
John R. Srigley, MD, FRCPC,‡‡ Brett Delahunt, MD, FRCPA,§§ Holger Moch, MD,||
and The ISUP Renal Tumor Panel

Testis tumour WHO classification

Histopathology



Histopathology 2017, 70, 513–521. DOI: 10.1111/his.13115

REVIEW

The World Health Organization 2016 classification of testicular non-germ cell tumours: a review and update from the International Society of Urological Pathology Testis Consultation Panel

Muhammad T Idrees,¹ Thomas M Ulbright,¹ Esther Oliva,² Robert H Young,² Rodolfo Montironi,³ Lars Egevad,⁴ Daniel Berney,⁵ John R Srigley,⁶ Jonathan I Epstein,⁷ Satish K Tickoo⁸ & the Members of the International Society of Urological Pathology Testicular Tumour Panel*

¹Department of Pathology and Laboratory Medicine, Indiana University, Indianapolis, IN, ²Pathology Department, Massachusetts General Hospital, Boston, MA, USA, ³Department of Pathology, Università Politecnica delle Marche, Ancona, Italy, ⁴Department of Pathology, Karolinska University Hospital, Stockholm, Sweden, ⁵Department of Molecular Oncology, Barts Cancer Institute, Queen Mary University of London, London, UK, ⁶Department of Pathology and Molecular Medicine, McMaster University, Hamilton, ON, Canada, ⁷Department of Pathology, The Johns Hopkins Hospital, Baltimore, MD, and ⁸Department of Pathology, Memorial Sloan Kettering Cancer Center, New York, NY

Histopathology



Histopathology 2017, 70, 335–346. DOI: 10.1111/his.13102

REVIEW

The World Health Organization 2016 classification of testicular germ cell tumours: a review and update from the International Society of Urological Pathology Testis Consultation Panel

Sean R Williamson,^{1,2} Brett Delahunt,³ Cristina Magi-Galluzzi,⁴ Ferran Algaba,⁵ Lars Egevad,⁶ Thomas M Ulbright,⁷ Satish K Tickoo,⁸ John R Srigley,⁹ Jonathan I Epstein,¹⁰ & Daniel M Berney,¹¹ the Members of the ISUP Testicular Tumour Panel*

¹Department of Pathology and Laboratory Medicine and Josephine Ford Cancer Institute, Henry Ford Health System, Detroit, MI, USA, ²Wayne State University School of Medicine, Detroit, MI, USA, ³Department of Pathology and Molecular Medicine, Wellington School of Medicine and Health Sciences, University of Otago—Wellington, Wellington, New Zealand,

⁴Robert J. Tomsich Pathology and Laboratory Medicine Institute, Cleveland Clinic, Cleveland, OH, USA, ⁵Section of Pathology, Fundació Puigvert, Universitat Autònoma de Barcelona, Barcelona, Spain, ⁶Department of Pathology, Karolinska University Hospital, Stockholm, Sweden, ⁷Department of Pathology and Laboratory Medicine, Indiana University, Indianapolis, IN, ⁸Department of Pathology, Memorial Sloan Kettering Cancer Center, New York, NY, USA,

⁹Department of Pathology and Molecular Medicine, McMaster University, Hamilton, Ontario, Canada, ¹⁰Department of Pathology, The Johns Hopkins Hospital, Baltimore, MD, USA, and ¹¹Department of Molecular Oncology, Barts Cancer Institute, Queen Mary University of London, London, UK